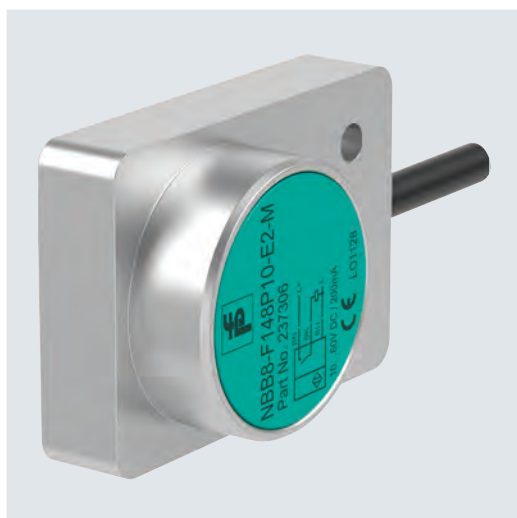


F148 Series



Standard Technical Data

Type of installation	Flush
Voltage type	DC
Switching frequency	600 Hz
Operating voltage (min)	10 V
Cable material	PUR
Housing length L	50 mm
Housing width W	35 mm
Housing height H	20 mm

For detailed data and description, see the datasheet. Further products can be found online at www.pepperl-fuchs.com.

Model number	Detection range [mm]	Output type	Output type	Switching function	UB (max)	Connection type	Cable length [mm]	E1 type approval
NBB8-F148P10-E0-M	8	3-wire	NPN	Normally-open (NO)	60	Fixed cable	2000	■
NBB8-F148P10-E2-M	8	3-wire	PNP	Normally-open (NO)	60	Fixed cable	2000	■
NBB8-F148P10-E2-M-0,15M-3DT04	8	3-wire	PNP	Normally-open (NO)	60	Fixed cable with Deutsch plug	150	■
NBB15-F148P10-E0-M	15	3-wire	NPN	Normally-open (NO)	60	Fixed cable	2000	■
NBB15-F148P10-E2-M	15	3-wire	PNP	Normally-open (NO)	60	Fixed cable	2000	■
NBB15-F148P10-E2-M-0,15M-3DT04	15	3-wire	PNP	Normally-open (NO)	60	Fixed cable with Deutsch plug	150	■
NBB15-F148P10-ARO	15	Relay	Relay	Normally-closed (NC)	30	Fixed cable	2000	
NBB15-F148P10-ARS	15	Relay	Relay	Normally-open (NO)	30	Fixed cable	2000	

