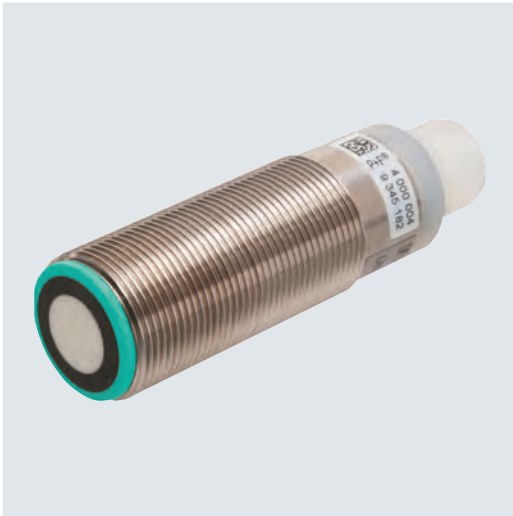


# 18GM60 Series Diffuse Mode Sensor



## Standard Technical Data

<b>Design</b>	Cylindrical
<b>Output type</b>	PNP
<b>Switching function</b>	Normally open/close selectable
<b>Voltage type</b>	DC
<b>Operating voltage (min)</b>	10 V
<b>Operating voltage (max)</b>	30 V
<b>Connection type</b>	M12 connector plug
<b>Housing diameter D</b>	18 mm
<b>CSA</b>	■
<b>UL</b>	■
<b>E1 type approval</b>	■

For detailed data and description, see the datasheet. Further products can be found online at [www.pepperl-fuchs.com](http://www.pepperl-fuchs.com).

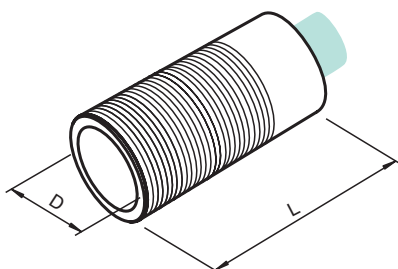
Model number	Version	Detection range [mm]	Dead band	Response delay [ms]	Switching frequency [Hz]	Length L
UB300-18GM60-E5-V1-M	Straight head	300	35	50	13	51
UB300-18GM60A-E5-V1-M	Angled head	300	35	50	13	69
UB800-18GM60-E5-V1-M	Straight head	800	50	100	4	51
UB800-18GM60A-E5-V1-M	Angled head	800	50	100	4	69

## Highlights

- Different sensing ranges for different object distances

## Brief Description

The 18GM60 ultrasonic diffuse mode sensor has proven itself in a number of applications. The five different output stages mean that it can be used for a wide variety of purposes. The teach-in input and temperature compensation are added bonuses. E1 type approval means that the sensor is also suitable for automotive engineering.



## Accessories

<b>BF 18</b>	Mounting adapter, 18 mm
<b>BF 18-F</b>	Plastic mounting adapter, 18 mm
<b>BF 5-30</b>	Universal mounting bracket for cylindrical sensors
<b>OMH-04</b>	Mounting aid for circular profile $\varnothing$ 12 mm or flat profile
<b>UB-PROG2</b>	Programming unit
<b>V1-G-2M-PVC</b>	Single-ended female cordset, M12, 4-pin, PVC cable
<b>V1-W-2M-PUR</b>	Single-ended female cordset, M12, 4-pin, PUR cable