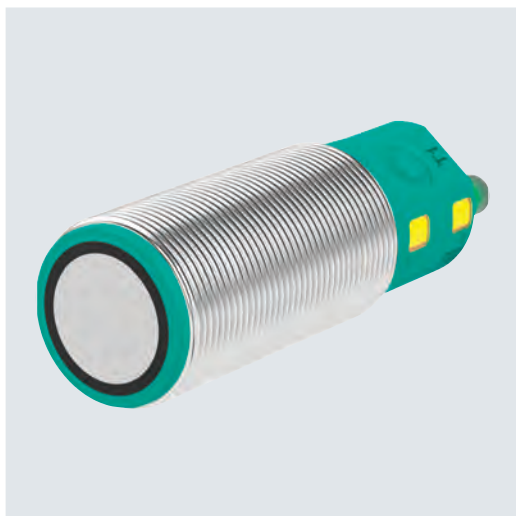


# 30GM-IO Series

## Diffuse Mode Sensor



### Standard Technical Data

|                                |                    |
|--------------------------------|--------------------|
| <b>Version</b>                 | Straight head      |
| <b>Design</b>                  | Cylindrical        |
| <b>Switching function</b>      | Push-pull output   |
| <b>Voltage type</b>            | DC                 |
| <b>Operating voltage (min)</b> | 10 V               |
| <b>Operating voltage (max)</b> | 30 V               |
| <b>Connection type</b>         | M12 connector plug |
| <b>CSA</b>                     | ■                  |
| <b>UL</b>                      | ■                  |

For detailed data and description, see the datasheet. Further products can be found online at [www.pepperl-fuchs.com](http://www.pepperl-fuchs.com).

| Model number            | Detection range [mm] | Dead band | Output type                             | Response delay [ms] | Switching frequency [Hz] | Length L | Diameter D |
|-------------------------|----------------------|-----------|---|---------------------|--------------------------|----------|------------|
| UC500-30GM-2EP-IO-V15   | 500                  | 30        | IO-Link, PNP/NPN                        | 25                  | 11                       | 93       | 30         |
| UC500-30GM-IUEP-IO-V15  | 500                  | 30        | Analog current output, IO-Link, PNP/NPN | 25                  | 11                       | 93       | 30         |
| UC2000-30GM-2EP-IO-V15  | 2000                 | 90        | IO-Link, PNP/NPN                        | 65                  | 4                        | 93       | 30         |
| UC2000-30GM-IUEP-IO-V15 | 2000                 | 90        | Analog current output, IO-Link, PNP/NPN | 65                  | 4                        | 93       | 30         |
| UC4000-30GM-2EP-IO-V15  | 4000                 | 200       | IO-Link, PNP/NPN                        | 115                 | 2                        | 108      | 40         |
| UC4000-30GM-IUEP-IO-V15 | 4000                 | 200       | Analog current output, IO-Link, PNP/NPN | 115                 | 2                        | 100      | 40         |
| UC6000-30GM-2EP-IO-V15  | 6000                 | 350       | IO-Link, PNP/NPN                        | 140                 | 2                        | 112      | 73         |
| UC6000-30GM-IUEP-IO-V15 | 6000                 | 350       | Analog current output, IO-Link, PNP/NPN | 140                 | 2                        | 106      | 73         |

### Highlights

- Simple integration in the control panel via IO-Link
- Integrated diagnostics and flexible parameterization
- Outstanding process reliability through direct access to process data and diagnostic data
- Wide array of graduated detection ranges

### Brief Description

The 30GM-IO series diffuse mode sensors are the multifunctional solutions for a range of application scenarios, from fill level measurement and presence detection to object counting and distance measurement. They are incredibly simple to parameterize, either using the buttons on the sensor or via the IO-Link interface. The sensors can be integrated easily into the control environment via this communication channel to exchange both process and service data. Various sound beam widths can be set via teach-in to suit the respective detection application. The IP67 degree of protection ensures optimal availability at all times.

### Accessories

|                             |  |
|-----------------------------|--|
| <b>BF 30</b>                | Mounting adapter, 30 mm  |
| <b>BF 30-F</b>              | Plastic mounting adapter, 30 mm  |
| <b>BF 5-30</b>              | Universal mounting bracket for cylindrical sensors with a diameter of 5 mm ... 30 mm                         |
| <b>IO-Link-Master02-USB</b> | IO-Link master, supply via USB port or separate power supply, LED indicators, M12 plug for sensor connection |
| <b>M30K-VE</b>              | Plastic nuts with centering ring for vibration-decoupled mounting of cylindrical sensors                     |
| <b>UC-30GM-R2</b>           | Connection: sub-D socket, 9-pin  |
| <b>UVW90-K30</b>            | Ultrasonic deviation reflector   |
| <b>UVW90-M30</b>            | Ultrasonic deviation reflector   |

