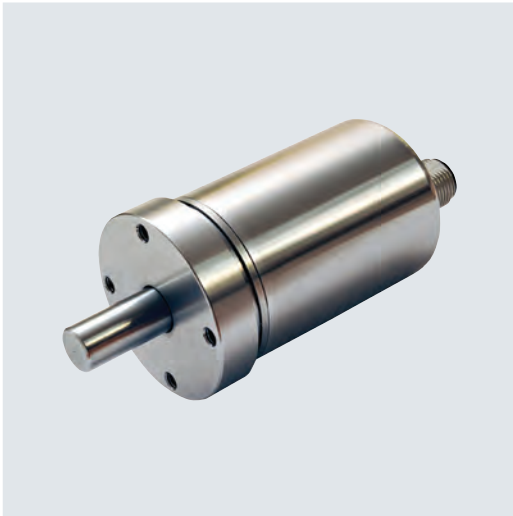
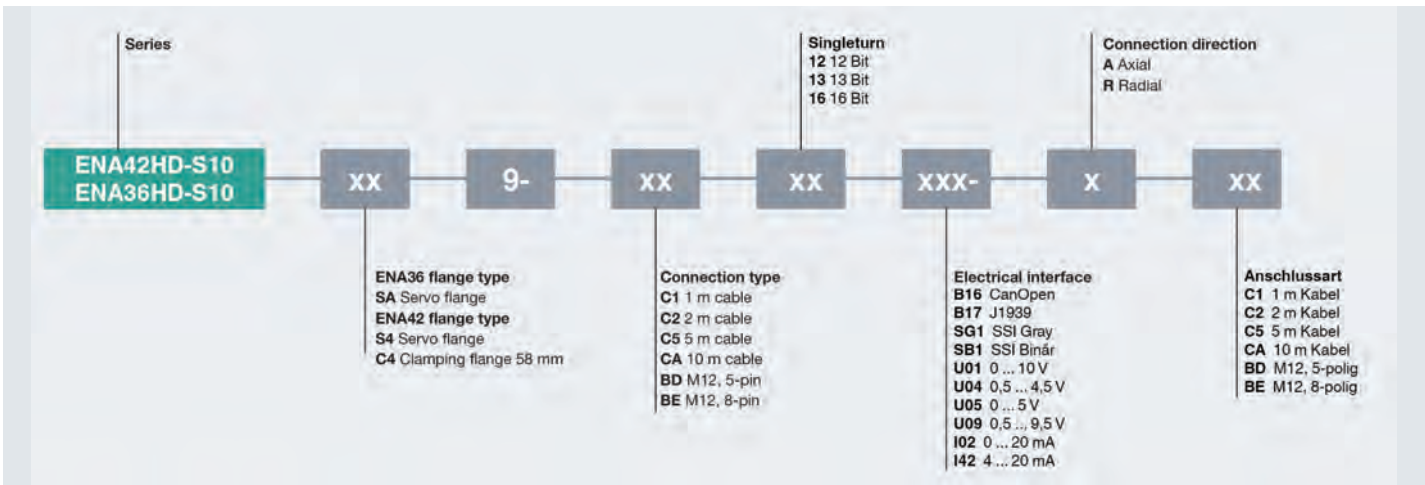


# ENA36HD and ENA42HD Series



Standard Technical Data	
Scanning method	Magnetic
Output type	Analog, CANopen, J1939, SSI
Singleturn	Up to 16 bit
Multiturn	Up to 16 bit
Connection type	Plug, cable
Housing design	Ø 36 mm or Ø 42 mm
Shaft type	Solid shaft
Rotational speed	Max. 6000 rpm
Degree of protection	IP68/IP69K
Operating temperature	-40 °C ... 85 °C
Shaft load	Ø36: Axial/Radial: 180 N Ø42: Axial/Radial: 270 N
UL	■

For detailed data and description, see the datasheet. Further products can be found online at [www.pepperl-fuchs.com](http://www.pepperl-fuchs.com).



## Highlights

- Rugged design ensures long service life under extreme operating conditions
- Optimized for mobile equipment and offshore applications with stainless steel housing and IP69K degree of protection
- Compact housing design for confined spaces
- Wear-free technology for high reliability

## Brief Description

### Rugged Design for Increased Service Life

These two sensors combine compact dimensions with simple mounting. The robust housing construction is also able to cope with high shaft loads. The sensors are also resistant to continual shocks and vibrations. The accuracy of up to 1° provides the best conditions for the exact positioning of moving tools on lifting or crane systems. This is true even in offshore and other adverse environments.

Accessories	
9401/9402	Spring steel coupling
9404	Spring disk coupling
9408	Double-loop coupling
9409	Bellows coupling
9410	Precision coupling
9460	Stainless steel bellows coupling
CW	Helix coupling
Example: 9404 10*10 (D1*D2 coupling)	