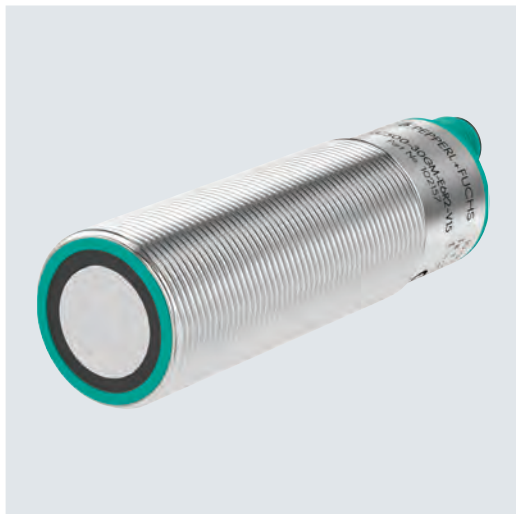


# UC-30GM Series Diffuse Mode Sensor



## Standard Technical Data

|                                |                    |
|--------------------------------|--------------------|
| <b>Design</b>                  | Cylindrical        |
| <b>Voltage type</b>            | DC                 |
| <b>Operating voltage (min)</b> | 10 V               |
| <b>Operating voltage (max)</b> | 30 V               |
| <b>Connection type</b>         | M12 connector plug |
| <b>CSA</b>                     | ■                  |
| <b>UL</b>                      | ■                  |

For detailed data and description, see the datasheet. Further products can be found online at [www.pepperl-fuchs.com](http://www.pepperl-fuchs.com).

| Model number           | Version       | Detection range [mm] | Dead band | Output type                                  | Switching function             | Switching frequency [Hz] | Length L | Diameter D | EAC |
|------------------------|---------------|----------------------|-----------|--|--------------------------------|--------------------------|----------|------------|-----|
| UC300-30GM-E6R2-K-V15  | Angled head   | 300                  | 30        | 2 * PNP, PNP                                 | Normally open/close selectable | 7                        | 25       | 18         |     |
| UC300-30GM-IUR2-K-V15  | Angled head   | 300                  | 30        | Analog voltage output, analog current output | Analog                         |                          | 25       | 18         |     |
| UC300-30GM-IUR2-V15    | Straight head | 300                  | 15        | Analog voltage output, analog current output | Analog                         |                          | 114      | 30         | ■   |
| UC500-30GM-E6R2-V15    | Straight head | 500                  | 30        | 2 * PNP, PNP                                 | Normally open/close selectable | 7                        | 94       | 30         |     |
| UC500-30GM-E7R2-V15    | Straight head | 500                  | 30        | 2 * NPN, NPN                                 | Normally open/close selectable | 7                        | 94       | 30         |     |
| UC500-30GM-IUR2-V15    | Straight head | 500                  | 30        | Analog voltage output, analog current output | Analog                         |                          | 114      | 30         |     |
| UC1000-30GM-E6R2-K-V15 | Angled head   | 1000                 | 80        | 2 * PNP, PNP                                 | Normally open/close selectable | 2                        | 27       | 30         |     |
| UC1000-30GM-IUR2-K-V15 | Angled head   | 1000                 | 80        | Analog voltage output, analog current output | Analog                         |                          | 27       | 30         |     |
| UC2000-30GM-E6R2-T-V15 | Straight head | 2000                 | 80        | 2 * PNP, PNP                                 | Normally open/close selectable | 2                        | 94       | 30         |     |
| UC2000-30GM-E6R2-V15   | Straight head | 2000                 | 80        | 2 * PNP, PNP                                 | Normally open/close selectable | 2                        | 94       | 30         | ■   |
| UC2000-30GM-E7R2-V15   | Straight head | 2000                 | 80        | 2 * NPN, NPN                                 | Normally open/close selectable | 2                        | 94       | 30         |     |
| UC2000-30GM-IUR2-T-V15 | Straight head | 2000                 | 80        | Analog voltage output, analog current output | Analog                         |                          | 114      | 30         |     |
| UC2000-30GM-IUR2-V15   | Straight head | 2000                 | 80        | Analog voltage output, analog current output | Analog                         |                          | 114      | 30         | ■   |
| UC4000-30GM-E6R2-V15   | Straight head | 4000                 | 200       | 2 * PNP, PNP                                 | Normally open/close selectable | 1                        | 108      | 40         |     |
| UC4000-30GM-E7R2-V15   | Straight head | 4000                 | 200       | 2 * NPN, NPN                                 | Normally open/close selectable | 1                        | 108      | 40         |     |
| UC4000-30GM-IUR2-V15   | Straight head | 4000                 | 200       | Analog voltage output, analog current output | Analog                         |                          | 128      | 40         |     |
| UC6000-30GM-E6R2-V15   | Straight head | 6000                 | 350       | 2 * PNP, PNP                                 | Normally open/close selectable | 0                        | 112      | 73         |     |
| UC6000-30GM-E7R2-V15   | Straight head | 6000                 | 350       | 2 * NPN, NPN                                 | Normally open/close selectable | 0                        | 112      | 73         |     |
| UC6000-30GM-IUR2-V15   | Straight head | 6000                 | 350       | Analog voltage output, analog current output | Analog                         |                          | 132      | 73         |     |

## Highlights

- Comprehensive parameterization for customized sensor adjustment
- Intuitive programming and configuration for easy commissioning
- Versions with offset transducers increase installation flexibility

## Brief Description

With a variety of parameterization options, the diffuse mode sensors are versatile and can be deployed individually. They are easy to configure via the integrated programming plug. Sensor versions with offset transducers offer an additional level of freedom during machine integration in special installation situations. With these characteristics, they offer an impressive array of potential solutions, such as distance measurement in container spreaders.

## Accessories

|                |   |
|----------------|---|
| <b>BF 18</b>   | Mounting adapter, 18 mm   |
| <b>BF 18-F</b> | Plastic mounting adapter, 18 mm   |
| <b>BF 30</b>   | Mounting adapter, 30 mm   |
| <b>BF 30-F</b> | Plastic mounting adapter, 30 mm   |
| <b>BF 5-30</b> | Universal mounting bracket for cylindrical sensors                                      |
| <b>M-105</b>   | Protective cap  |
| <b>M30K-VE</b> | Plastic nuts with centering ring  |
| <b>OMH-04</b>  | Mounting aid for circular profiles $\varnothing$ 12 mm or flat profiles 1.5 mm ... 3 mm |

